



North Wales Drug Interventions Programme

Information Pack

GLOSSARY

AM	Assembly Member
AR	Arrest Referral
ATR	Alcohol Treatment Requirement
AUDIT	Alcohol Use Disorders Identification Test
BEM	Black & Ethnic Minority
BSC	Building Safer Communities
CAIS	Cyngor Alcohol Information Services
CALM	Controlling Anger and Learning to Manage It
CARAT	Counselling Assessment Referral Advice Throughcare
CDAS	Community Drug & Alcohol Service
CJB	Criminal Justice Board
CJIP	Criminal Justice Intervention Programme
CJIS	Criminal Justice Intervention Service
CJIT	Criminal Justice Integrated Teams
COVAID	Control of Violence for Angry Impulsive Drinkers
CPA	Care Programme Approach
CSP	Community Safety Partnership
DANOS	Drug & Alcohol National Occupational Standards
DELLS	Department of Education & Lifelong Learning Skills
DIDs	Drink Impaired Driving
DIP	Drug Interventions Programme
DIR	Drug Interventions Record
DOM	Director of Offender Management
DRR	Drug Rehabilitation Requirement
DTTO	Drug Treatment and Testing Orders
ESF	European Social Funding
ETE	Education, Training & Employment
ETS	Enhanced Thinking Skills
FDR	Fast Delivery Report (formerly SSR)
HDC	Home Detention Curfew
HMO	Houses of Multiple Occupancy
HMP	Her Majesty's Prison
HSW	Health Solution Wales
IDAP	Integrated Domestic Abuse Programme
ILM	Intermediate Labour Market
IMSCAR	Institute of Medical and Social Care Research
JAG	Joint Action Group
KPI	Key Performance Indicators
LCJB	Local Criminal Justice Board
LHB	Local Health Board
LIAM	Lower Intensity Alcohol Misuse Module
MAPPA	Multi Agency Public Protection Arrangements
MAPPP	Multi Agency Public Protection Panel
MARAC	Multi Agency Risk Assessment Committee

MP	Member of Parliament
NOMS	National Offender Management Service
NPD	National Probation Directorate
NWPA	North Wales Probation Area
NWP	North Wales Police
OASys	Offender Assessment System
OM	Offender Management
OSAP	Offender Substance Abuse Programme
PLM	Probation Liaison Meetings
PPO	Prolific and Other Priority Offenders
RA	Required Assessment
RAP	Rapid Access Prescribing
ROB	Restriction on Bail
ROMS	Regional Offender Management Service
RRAP	Reducing Re-Offending Action Plan
SCF	Safer Communities Fund
SLA	Service Level Agreement
SMAT	Substance Misuse Action Team
SMG	Service Management Group
SMT	Senior Management Team
SMTF	Substance Misuse Treatment Framework
SMS	Substance Misuse Service
SPOC	Single Point of Contact
SPOP	Supporting People Operational Plan
SPRG	Supporting People Revenue Grant
RMB	Regional Management Board
RSL	Registered Social Landlords
Tough Choices	The name given to the expansion of the DIP through three elements; testing on arrest, required assessment and restriction on bail
TSS	Transitional Support Scheme
WAG	Welsh Assembly Government
WCVA	Wales Council for Voluntary Action
WEFO	Wales European Funding Office
YIP	Youth Inclusion Project
YOS	Youth Offending Service
YOT	Youth Offending Team

Brief Description of Services

Drug Interventions Programme.

Throughcare and Aftercare is part of the Government's Drug Interventions Programme. It began as a three-year programme to develop and integrate measures for directing adult misusing offenders out of crime and into treatment. Through the Programme criminal justice and treatment agencies work together with the providers of aftercare services to deliver a tailored package of care for adults who commit crime to fund their drug use. At every stage of the criminal justice system, the programme maximises the opportunities for engaging drug misusers in treatment. It is an end to end support system that aims to ensure that drug misusing offenders no longer fall through the net.

The Home Office has made available funding for Criminal Justice Integrated Teams (CJIT) as part of the Drug Interventions Programme (DIP). £5 million has been devolved to the Welsh Assembly Government for the implementation of Criminal Justice Integrated Teams in Wales. With £1,295.170 allocated to North Wales. The Assembly is accountable to the Home Office for ensuring that the funding is used to support the objectives of the DIP and that the Programme is compatible with the Home Office's key performance indicators.

The aims of the Drug Interventions Programme are:-

- To provide integrated care for drug mis-users entering and leaving the criminal justice system from the point of arrest through to the end of sentence (community and custodial) including any relevant post-release licence period. This includes those leaving treatment in a planned or unplanned way irrespective of their involvement in the criminal justice service.
- To break the destructive cycle of drugs, offending and prison.
- To increase year on year the proportion of users successfully completing treatment programmes by providing "end to end" care co-ordination through sentences and beyond.
- To engage and involve clients in a range of services by screening and assessing them according to their various levels of presenting need and risk; and facilitate their involvement in these by means of tailored joint care planning.
- To reduce drug related offending and improve health and social functioning by achieving a step-change increase in the numbers of drug mis-users who access treatment rapidly and remain within it.

- To provide a seamless, gap free Level 2 service with rapid access to short term prescribing whilst awaiting Level 3 treatment.
- To adopt a case management approach, offering access to specialist treatment and support services from an offender's first contact with the criminal justice system through custody, court, sentence and beyond.
- To encourage the active involvement of ex users and volunteers.
- To ensure equality of access across North Wales, taking into consideration the urban/rural nature of the locality.
- To progress DIP service users into sustainable employment.
- Develop working protocols with prisons and Young Offenders Institute who provide services to North Wales residents.
- To ensure all DIP service users are contacted if they disengage with the service from commencement of service.

The key principles underpinning this service are:-

- Services provided will aim to reduce the harm of substance misuse to service users, their families and associates and the local community.
- Services provided will form part of a multi agency response to substance mis-users in North Wales.
- Provision for service users will take into account their individual health and social care needs.
- Services shall be provided in a non-discriminatory, non-patronising and professional manner. In a way that demonstrates courtesy and respect for individuals misusing substances, and sensitivity to their personal situation and experiences.
- DIP shall respond positively to cultural, religious, language, gender, sexuality, disability, age and communication needs.
- DIP will deal sensitively with the issues relating to confidentiality, harassment and discrimination.
- The views of DIP service users will be sought to ensure that services are appropriate and responsive to changing patterns of need.

- Services should be equitable in terms of access ensuring that services are delivered as locally as possible.
- No dis-investment in pre-existing services as a result of the DIP.
- Participation of all service users in DIP is voluntary.

The eligibility criteria for the service;

- Those who enter the criminal justice system who are identified or identify themselves as drug mis-users.
- Those who leave drug treatment in a planned or unplanned way irrespective of whether they are currently involved in the criminal justice system.
- Clients with drug and alcohol problems – not alcohol alone,
- Self referrals and referrals from other agencies.
- The Programme is generally not available to individuals under the age of 18. However, should a client under 18 at the point of entry to the criminal justice system reach his/her 18th birthday before completion of sentence then they will become eligible for the Programme.

CARAT

Counselling, Assessment, Referral, Advice and Throughcare (CARAT) services.

CARAT teams meet the non-clinical needs of the great majority of prisoners, providing low threshold, low intensity drug services within prison. By working with community organisations CARAT teams ensure the continuity of treatment/interventions on completion of a custodial sentence.

PPO

Prolific and other Priority Offenders (PPO) programme was launched in March 2004. The programme is led by Community Safety Partnership (CSP), working closely with Local Criminal Justice Boards (LCJB's), featuring the joined-up multi-agency offender management model involving representatives from the local police, probation, Local Authorities and Youth Justice Teams.

Three strands of the programme:

- Catch and Convict offenders who commit most crime in their locality, or whose offending causes most harm to their community;
- Rehabilitate and Resettle those identified as 'PPO's' working with them to stop their offending by offering a range of supportive interventions

addressing identified needs/risk of further offending. The opportunity to rehabilitate is backed by a swift return to court if offending continues;

- Prevent and Deter to increase the overall impact of the strategy by ensuring that those effectively targeted by CC/RR are not replaced by a next generation of offenders. The principle aim is to stop the most active young offenders escalating into tomorrow's prolific offenders through youth justice interventions and continued post-sentence support.

Arrest Referral

Arrest Referral schemes established in 2001 are partnership initiatives between the police, DIP and local drug services that use the point of arrest within custody suites as an opportunity for CJIT workers to engage with problem drug using offenders and help them access treatment. Across N.Wales custody nurses are an integral part of this process.

TSS

The Transitional Support Scheme is aimed at persistent prolific offenders most at risk of re-offending during the first twelve weeks after release. The mentor will work with the service user for up to 12 weeks and introduce/refer service users to a range of community based services. The mentor will visit the service user a minimum of two times before release to establish relationships, assess need and agree actions upon release. Where appropriate the mentor will meet the service user at the gate and facilitate visits/appointments to pre-arranged professional/agencies.

CDAS

Community Drug and Alcohol Service believes in reducing the risk and damage caused by drug or alcohol to the individual, the family and the local community. The service is available to people who are seeking information, advice, treatment, care or counselling with their drug or alcohol problem in Wrexham, Flintshire, Conwy and Denbighshire. Advice and information is available to the general public.

Following assessment there are a range of options available; community detoxification, in-patient detoxification, dose titration, substitute prescribing, harm reduction, and relapse prevention. NHS Trust staff work closely with social services colleagues to provide community and residential rehabilitation placements.

SMS

The North West Wales NHS Trust Substance Misuse Service provide a range of effective, tailored specialist treatment interventions from a number of bases throughout North West Wales, by competent, professionally qualified and accountable staff. Services include:-

Psychological Interventions, Counselling Services, Harm Minimisation Advice/Information, Detoxification services (Community and residential) Infection



Llywodraeth Cynulliad Cymru
Welsh Assembly Government



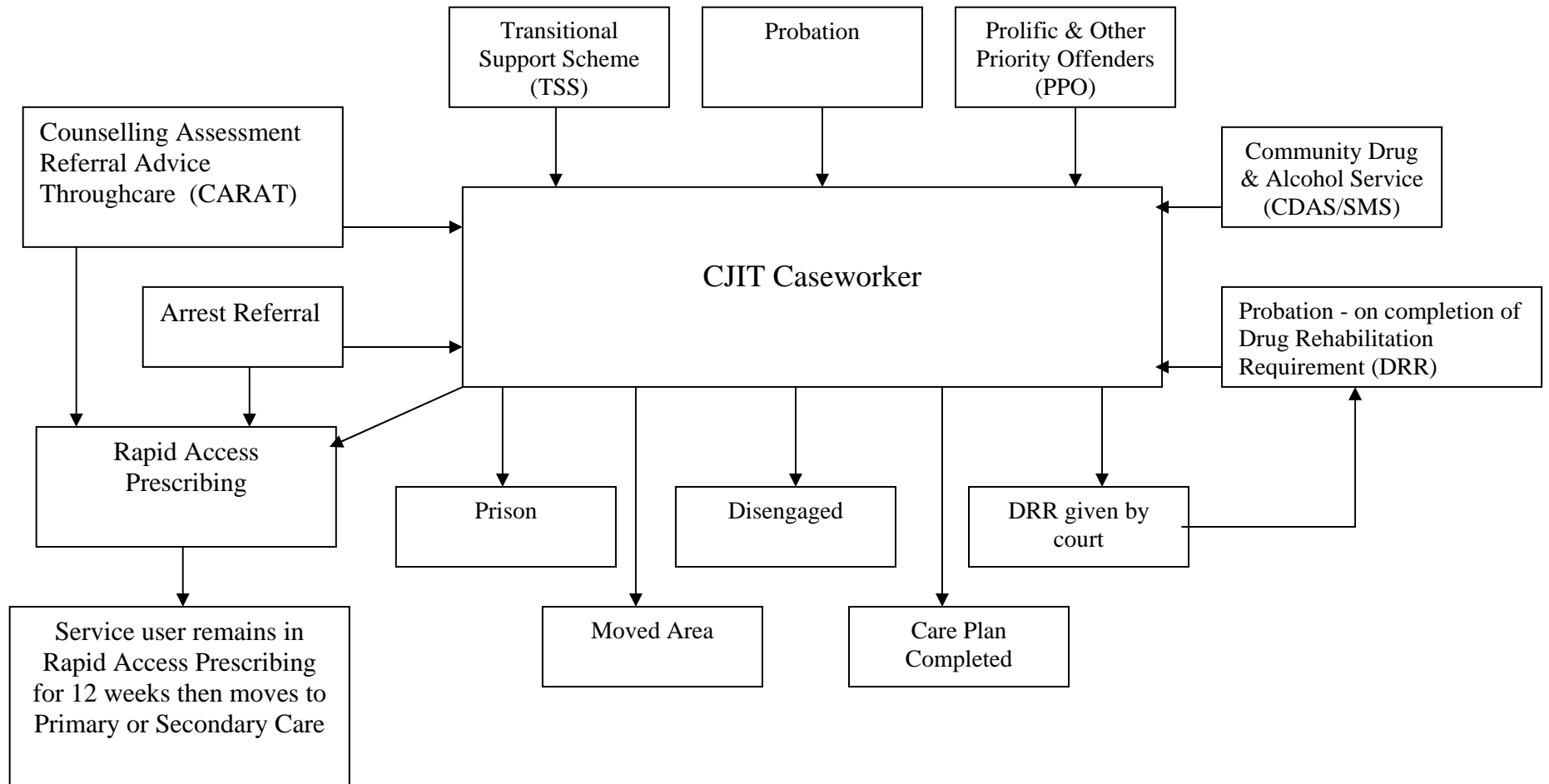
Treatments, Needle Exchange, Family Interventions, Advice / Information, Specialist Training, Advocacy
Specialist Medical Interventions (Tier 2, 3 and 4) – providing substitute prescribing, symptomatic prescribing, and relapse prevention prescribing. Motivational Interviewing. Care / support packages are tailored to individual need.

DAN 24/7

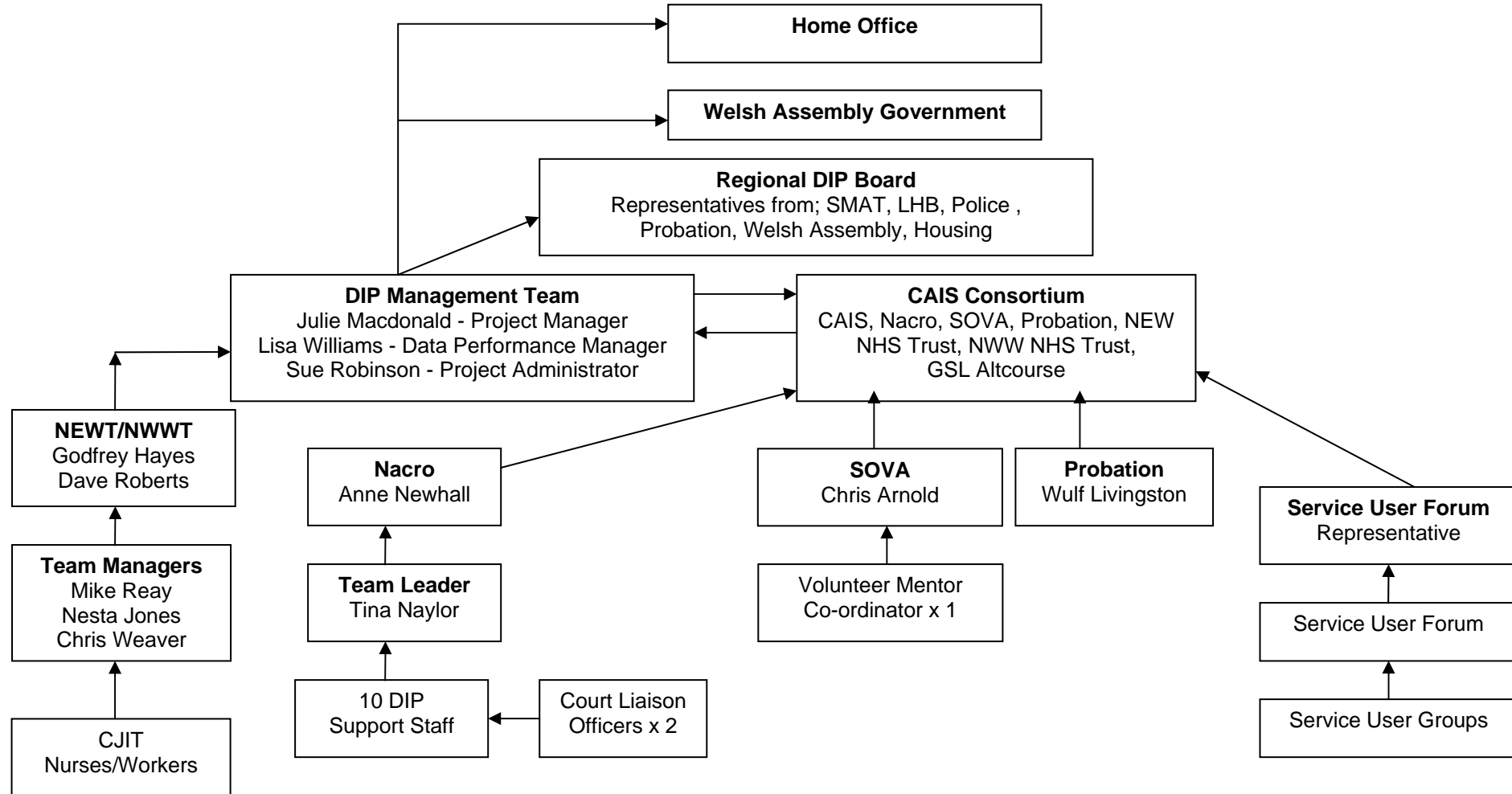
All Wales drug and alcohol helpline, available to all services, service users, families and the wider community. Offers information and advice.

Although funded by DIP the helpline is not exclusively for DIP use.

Drug Interventions Programme Referral Pathway



DRUG INTERVENTIONS PROGRAMME REPORTING STRUCTURE



Provision Commissioned by North Wales DIP - 2007/2008

Main DIP Provision

CAIS Consortium
X 10 Caseworkers – Nacro
Court Liaison Worker – Nacro
Volunteer/Mentor Coordinator – SOVA

Rapid Access Prescribing

NEW NHS Trust (includes supervised consumption)
Conwy/Denbighshire x 2 clinics per week. 100 service users per year –
prescriber Dr. J. O'Toole

Wrexham LHB (includes supervised consumption)
Wrexham – 60 service users per year – prescriber Dr. Tim Little (enhanced
contract GP). 1 clinic per week.

NWW NHS Trust (includes supervised consumption)
Gwynedd/Mon – 100 service users per year – prescriber Dr. J. O'Toole

Arrest Referral

NEW NHS Trust
Conwy/Denbighshire/Flintshire/Wrexham x 3 custody suites. Mold/Wrexham
custody provide 'test on charge'. All positive tests should result in an Arrest
Referral

NWW NHS Trust
Gwynedd/Mon – 1 main custody suite – Caernarfon.
Secondary suite – Holyhead and Dolgellau

Housing

Agorfa Bond Scheme
Providing pre and post tenancy support for a range of service users and
landlords.

Flintshire Tier 2 Project
NEW NHS Trust/Flintshire Social Services



A range of projects to support services with education, training and employment.

Diversionsary Activities

CJIW (Community Justice Interventions Wales)

Monthly diversionary activity at Plas Y Brenin for a group of 15 Criminal Justice service users. Co-funded by Probation.

CJIW - Christmas Activity Project – Development of a community based project. Service users will receive credits for participation. Credits will result in children's christmas gifts.

Summary of DIP Social Support

Additionality Monies

Eligibility – arrest referral, DIP, TSS, Probation service users on DRR's and PPO (Drugs)

Criteria – Worker needs to evidence that they have attempted to source via other funding, funding to have a positive impact on service user engagement or completion of an order.

Access – under £50.00 Access via local Probation or DIP Office (receipts to be provided), in excess of £50.00 access via Wulf Livingstone (07780 625 320) or Julie Macdonald (07799 697 510)

Argos Vouchers

Eligibility –DIP service user

Criteria – DIP service user accessing new accommodation and funding to have a positive impact on service users engagement.

Access – via Sue - 01492 536672 – vouchers to the value of £50.

Bus Passes

Eligibility –DIP service user

Criteria – service user needing to travel to probation, DIP , health and wrap around service appointments . Bus pass valid for a 4 week period.

Access – via Sue - 01492 536672

Nursery Sessions

Eligibility –DIP/Probation service users

Criteria – Service user needing childcare to allow them to attend appointments, courses etc that will have a positive impact on engagement with services.

Access – via Single point of contact - 01492 533269

